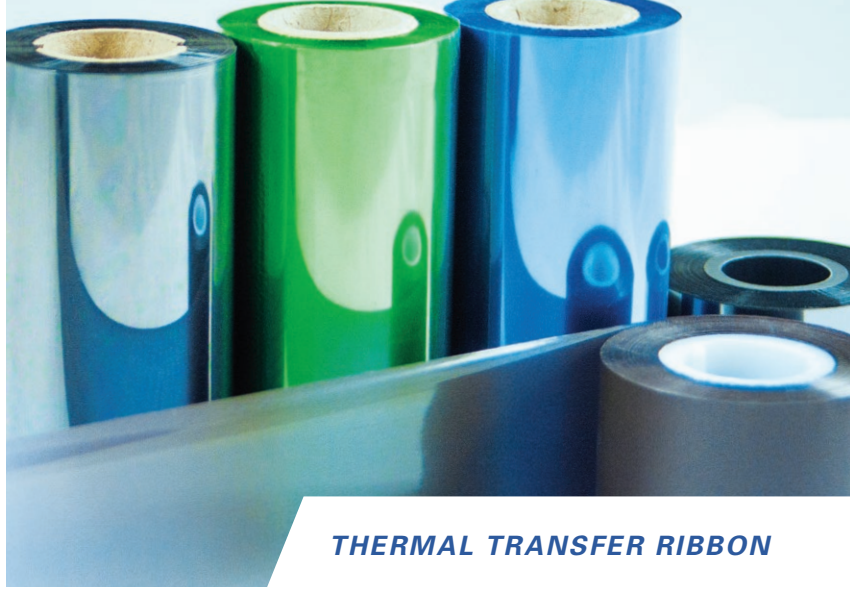


# FTX501

## Near Edge / Resin

High performance resin for bar code printers.



### THERMAL TRANSFER RIBBON

- ✓ Excellent print quality on a wide variety of stocks.
- ✓ FTX501 fits most general resin applications for electronics, automotive and product identification.
- ✓ Designed to work in harsh environment for demanding industrial applications.

### APPLICATIONS



INDUSTRIAL



PRODUCE



MEDICAL



LOGISTICS



PHARMACEUTICAL



ELECTRICAL



PARTS  
PACKAGING

### SPECIFICATIONS

*for reference only*

Description	Specification
Total Thickness	6.8µm
Base Film Thickness	4.5µm
Ink Thickness	1.8µm
Print Density	1.6
Melting Point	75°C

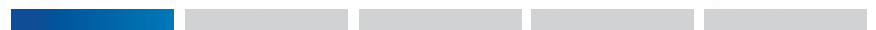
### CHARACTERISTICS

*for reference only*

#### Receptor Compatibility



#### Speed Performance - compared to other resin ribbon using date coding printer



#### Print Sensitivity



#### Scratch Resistance



#### Alcohol Resistance



#### Heat Resistance - up to 140°C (Tested with coated paper)



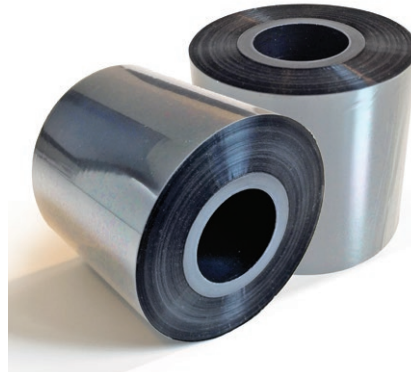
# FTX501

## Near Edge / Resin

THERMAL TRANSFER RIBBON



### APPLICATION



### CERTIFICATIONS



### PRODUCT LINEUP

#### NEAR EDGE

Wax/Resin	Resin	
FTX403XP	FTX311	<b>FTX501</b>
FTX401	FTX312	
FTX402	FTX313	
FTC400 Color	FTX314	

### RECOMMENDED LABEL STOCKS

› Synthetic Paper	› Polyolefin
› Polyester	› Polypropylene
› Polyethylene	

### CONTACT FUJICOPIAN GROUP

#### ASIA-PACIFIC

##### Fujicopian Co.,Ltd.

Tokyo  
Kamei Bldg, 17-13, Kiba 2-chome  
Koto-ku, Tokyo 135-8525 Japan  
Tel: +81 (0) 3 3642 0333  
Fax: +81 (0) 3 3642 0588

[info@fujicopian.com](mailto:info@fujicopian.com)  
[www.fujicopian.com](http://www.fujicopian.com)

#### CHINA-HONG KONG

##### Fuji Copian (H.K.) Ltd.

Unit 2202, 22nd Floor Peninsula Tower  
538 Castle Peak Road, Cheung Sha  
Wan, Kowloon, Hong Kong,  
Tel: +852 2155 1488  
Fax: +852 2155 1489

[info@fujicopian.com](mailto:info@fujicopian.com)  
[www.fujicopian.com](http://www.fujicopian.com)

#### EUROPE & AFRICA

##### Fujicopian Co.,Ltd. (Europe) Branch

The Joiners Shop  
The Historic Dockyard, Chatham,  
Kent, ME4 4TZ UK  
Tel: +44 (0) 1634 816 116  
Fax: +44 (0) 1634 816 001  
[sales@fujicopian-eu.com](mailto:sales@fujicopian-eu.com)  
[www.fujicopian.com](http://www.fujicopian.com)

#### NORTH & SOUTH AMERICA

**Exclusive distributor of Fujicopian  
thermal transfer products**

##### Palmetto Imaging Technology, LLC

1214 State Highway 34E,  
Winnsboro, SC 29180 U.S.A  
Tel: +1 803 635 9799,  
+1 800 441 3854

Fax: +1 803 635 9805  
[ttrcustomerservice@pitsc.com](mailto:ttrcustomerservice@pitsc.com)  
[www.pitsc.com](http://www.pitsc.com)



[www.fujicopian.com](http://www.fujicopian.com)