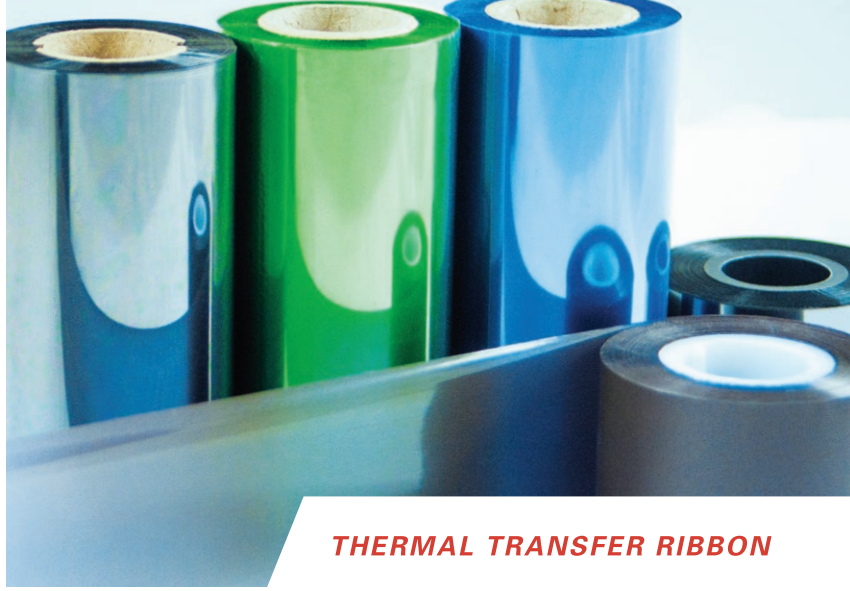


FTX401

Near Edge / Wax Resin

Exceptional print quality and durability to the widest range of labels and packaging material.



THERMAL TRANSFER RIBBON

- ✓ The exceptional print quality and durability of FTX401 is created by its special technology with an adhesive built right in to anchor the ink to the substrate.
- ✓ The high level of scratch and smudge resistance of FTX401 makes it ideal for durable applications in horticulture and lumber.
- ✓ The versatile print performance of FTX401 makes it the perfect solution for the ever growing number of film substrates and date coding applications.

APPLICATIONS



FLEXIBLE PACKAGING



PRODUCE



MEDICAL



LOGISTICS



MEAT PACKAGING



DAIRY



PARTS PACKAGING

SPECIFICATIONS

for reference only

Description	Specification
Total Thickness	7.8µm
Base Film Thickness	4.5µm
Ink Thickness	3.2µm
Print Density	1.5
Melting Point	60°C

CHARACTERISTICS

for reference only

Receptor Compatibility



Speed Performance - tested at 40 IPS (inches per second)



Print Sensitivity



Scratch Resistance



Alcohol Resistance



FTX401

Near Edge / Wax Resin

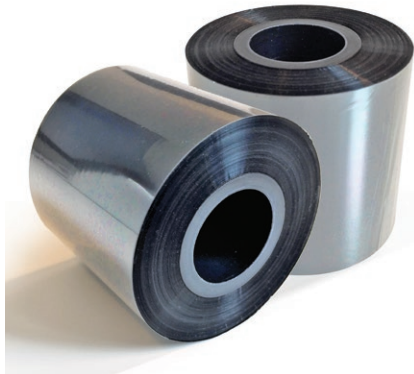
THERMAL TRANSFER RIBBON



APPLICATION



CERTIFICATIONS



PRODUCT LINEUP

NEAR EDGE

Wax/Resin	Resin	
FTX403XP	FTX311	FTX501
FTX401	FTX312	
FTX402	FTX313	
FTC400 Color	FTX314	

RECOMMENDED LABEL STOCKS

> Polypropylene	> Polyethylene
> Polyolefin	> Polyester
> Coated Paper	

CONTACT FUJICOPIAN GROUP

ASIA-PACIFIC

Fujicopian Co.,Ltd.

Tokyo
Kamei Bldg, 17-13, Kiba 2-chome
Koto-ku, Tokyo 135-8525 Japan
Tel: +81 (0) 3 3642 0333
Fax: +81 (0) 3 3642 0588

info@fujicopian.com
www.fujicopian.com

CHINA-HONG KONG

Fuji Copian (H.K.) Ltd.

Unit 2202, 22nd Floor Peninsula Tower
538 Castle Peak Road, Cheung Sha
Wan, Kowloon, Hong Kong,
Tel: +852 2155 1488
Fax: +852 2155 1489

info@fujicopian.com
www.fujicopian.com

EUROPE & AFRICA

Fujicopian Co.,Ltd. (Europe) Branch

The Joiners Shop
The Historic Dockyard, Chatham,
Kent, ME4 4TZ UK
Tel: +44 (0) 1634 816 116
Fax: +44 (0) 1634 816 001
sales@fujicopian-eu.com
www.fujicopian.com

NORTH & SOUTH AMERICA

Exclusive distributor of Fujicopian
thermal transfer products

Palmetto Imaging Technology, LLC

1214 State Highway 34E,
Winnsboro, SC 29180 U.S.A
Tel: +1 803 635 9799,
+1 800 441 3854

Fax: +1 803 635 9805
ttrcustomerservice@pitsc.com
www.pitsc.com



www.fujicopian.com