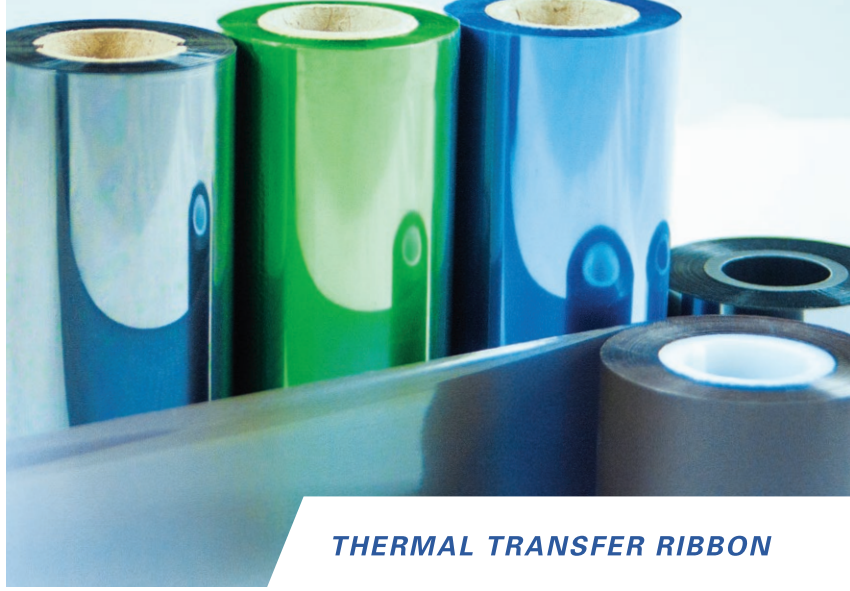


FTX314

Near Edge / Flat Head Resin

Resin for demanding coding and packaging solutions.



THERMAL TRANSFER RIBBON

- ✓ With the advent of higher speed thermal transfer printers, FTX314 keeps up with the increasing demands for speed and performance.
- ✓ FTX314 is a versatile printing ink ideal for a wide range of printers and applications.
- ✓ FTX314 offers durability for industrial applications, with strong abrasion, steam, heat and chemical resistance.

APPLICATIONS



FLEXIBLE PACKAGING



PRODUCE



MEDICAL



LOGISTICS



PHARMACEUTICAL



ELECTRICAL



PARTS PACKAGING

SPECIFICATIONS

for reference only

Description	Specification
Total Thickness	5.5µm
Base Film Thickness	4.0µm
Ink Thickness	1.4µm
Print Density	2.2
Melting Point	80°C

CHARACTERISTICS

for reference only

Receptor Compatibility



Speed Performance - tested at 40 IPS (inches per second)



Print Sensitivity



Scratch Resistance



Alcohol Resistance - product is rated level 4 when used with Flat Head printer



Heat Resistance - up to 240°C (Tested with coated paper)



FTX314

Near Edge / Flat Head Resin

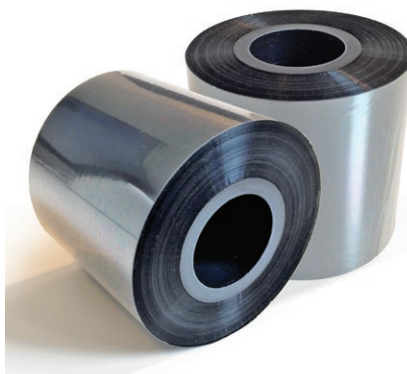
THERMAL TRANSFER RIBBON



APPLICATION



CERTIFICATIONS



PRODUCT LINEUP

NEAR EDGE

Wax/Resin	Resin	
FTX403XP	FTX311	FTX501
FTX401	FTX312	
FTX402	FTX313	
FTC400 Color	FTX314	

RECOMMENDED LABEL STOCKS

› Coated and Uncoated Paper	› OPP / CPP
› PET / LLDPE	› ONY / LLDPE
› Synthetic Paper	

OPP - Oriented Polypropylene
CPP - Cast Polypropylene
PET - Polyester

ONY - Biaxially Oriented Nylon
LLDPE - Linear Low Density Polyethylene

CONTACT FUJICOPIAN GROUP

ASIA-PACIFIC

Fujicopian Co.,Ltd.

Tokyo
Kamei Bldg, 17-13, Kiba 2-chome
Koto-ku, Tokyo 135-8525 Japan
Tel: +81 (0) 3 3642 0333
Fax: +81 (0) 3 3642 0588

info@fujicopian.com
www.fujicopian.com

CHINA-HONG KONG

Fuji Copian (H.K.) Ltd.

Unit 2202, 22nd Floor Peninsula Tower
538 Castle Peak Road, Cheung Sha
Wan, Kowloon, Hong Kong,
Tel: +852 2155 1488
Fax: +852 2155 1489

info@fujicopian.com
www.fujicopian.com

EUROPE & AFRICA

Fujicopian Co.,Ltd. (Europe) Branch

The Joiners Shop
The Historic Dockyard, Chatham,
Kent, ME4 4TZ UK
Tel: +44 (0) 1634 816 116
Fax: +44 (0) 1634 816 001
sales@fujicopian-eu.com
www.fujicopian.com

NORTH & SOUTH AMERICA

Exclusive distributor of Fujicopian thermal transfer products

Palmetto Imaging Technology, LLC

1214 State Highway 34E,
Winnsboro, SC 29180 U.S.A
Tel: +1 803 635 9799,
+1 800 441 3854

Fax: +1 803 635 9805
ttrcustomerservice@pitsc.com
www.pitsc.com



www.fujicopian.com